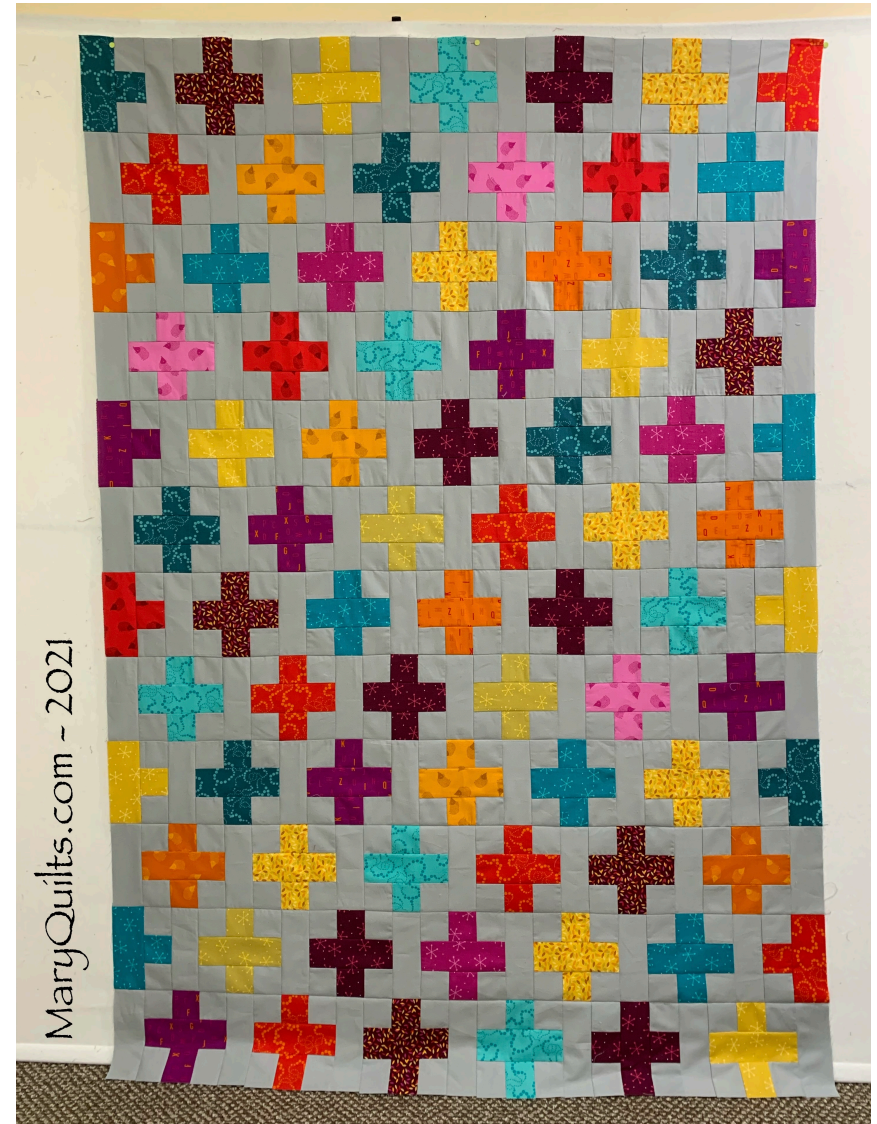


Plus 1

Quilt Notes

- Quilt size - approximately 50 x 72
- Block size is 6 inches finished (6.5 inches with seam allowances)
- Partial blocks begin and end every other row.
- Rectangles between blocks are cut 2.5 x 6.5
- I used part of one Jelly Roll and approximately 2.5 yards of my background fabric. I like to have extra fabric just in case and I started with 3 yards of my background.



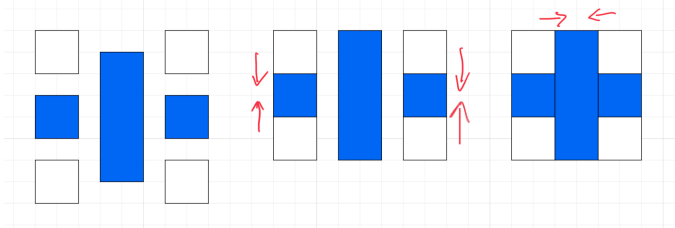
Plus Block - Make 66

For each block, cut from a colored 2.5 inch strip

- (2) 2.5 inch squares
- (1) 6.5 x 2.5 inch rectangle

For each block cut (4) 2.5 inch squares from your background fabric

Sew squares together first and then sew to the rectangle. Press in the direction of the arrows, toward the dark fabric.

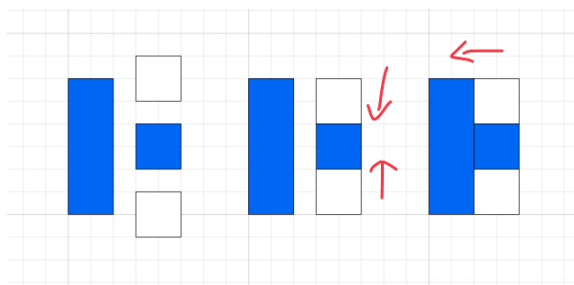


Partial block - Make 12

For each partial block, cut from a 2.5 inch colored strip

- (1) 6.5 inch rectangle
- (1) 2.5 inch square.

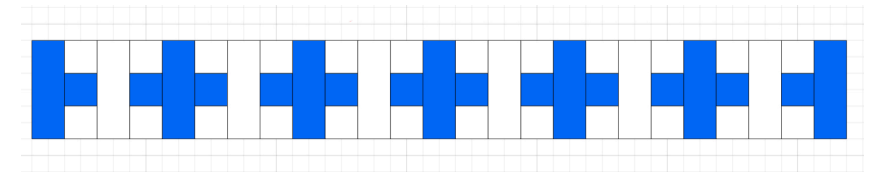
Cut (2) 2.5 inch squares from your background fabric



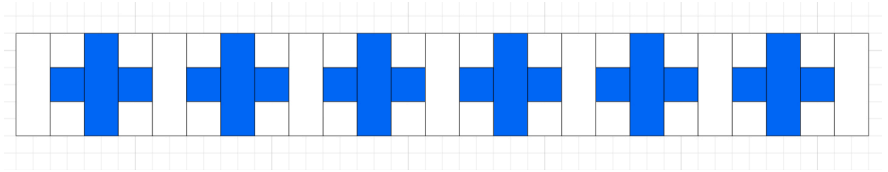
Assemble top

You will assemble two different rows and alternate them. Background rectangles will be pieced between blocks.

Row 1 will start and end with a partial block. Press seams toward blocks and away from the rectangles so your seams will nestle.



Row 2 will start and end with a rectangle piece. Press seams toward blocks and away from the rectangles so your seams will nestle.



Continue alternating row 1 with row 2 until the 12 rows of the quilt have been assembled.