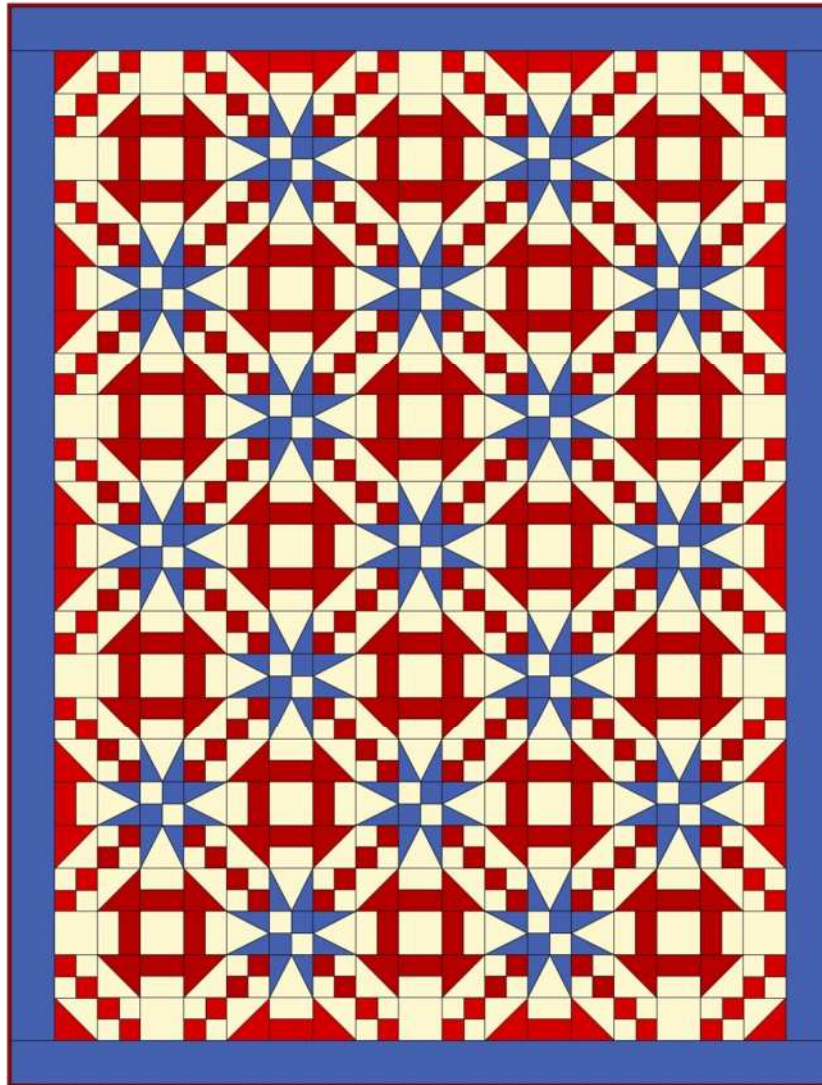


# CHURN DASH & STARS

---

QUILT SIZE IS APPROXIMATELY 57 x 75

BLOCK SIZE 9 INCHES (9.5 INCHES WITH SEAM ALLOWANCES)



## QUILT NOTES:

1. You can either make this quilt as shown above with a pieced border that completes the circle effect of the blocks or you can add plain borders which will be shown at the end of the instructions
2. The quilt is show in three colors but you can make it scrappy by using lots of reds, blues, and white/cream/tans.
3. **UNTESTED** yardage from EQ7 shows that the quilt as pieced above would take 1 and  $\frac{3}{4}$  yards of red; 2 and  $\frac{1}{2}$  yards of white; and 1 and  $\frac{5}{8}$  yards of blue which assumes that the long strips for the border are pieced.

## PIECING BLOCKS – BLOCK A

### Churn Dash block – piece 18

You will need a variety of red and white strips cut 2 inches which will be used for these Churn Dash blocks and the 4 patches in the star blocks. So make a variety of strips sets sewing one red to one white fabric.

For each Churn dash block you will need:

- (4) 3.5 inch half square triangles made using any method you choose from your red and white fabric.
- (1) 3.5 inch white square
- (4) 3.5 inch sections sub cut from your red and white strip sets.

Assemble these elements as shown below.



### Star block – piece 17

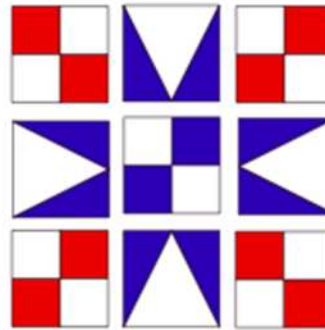
In addition to the red and white strip sets, you will need blue and white ones for the star center four patches. You will cut these strips 2 inches as you did for the red and white strips. Sub cut into 2 inches and sew two together for a 3.5 inch four patch (includes seam allowance)

Star points can be paper pieced (see download on project page), pieced using Peaky and Spike templates, or cut from the Triangle in a Square die from Accuquilt.

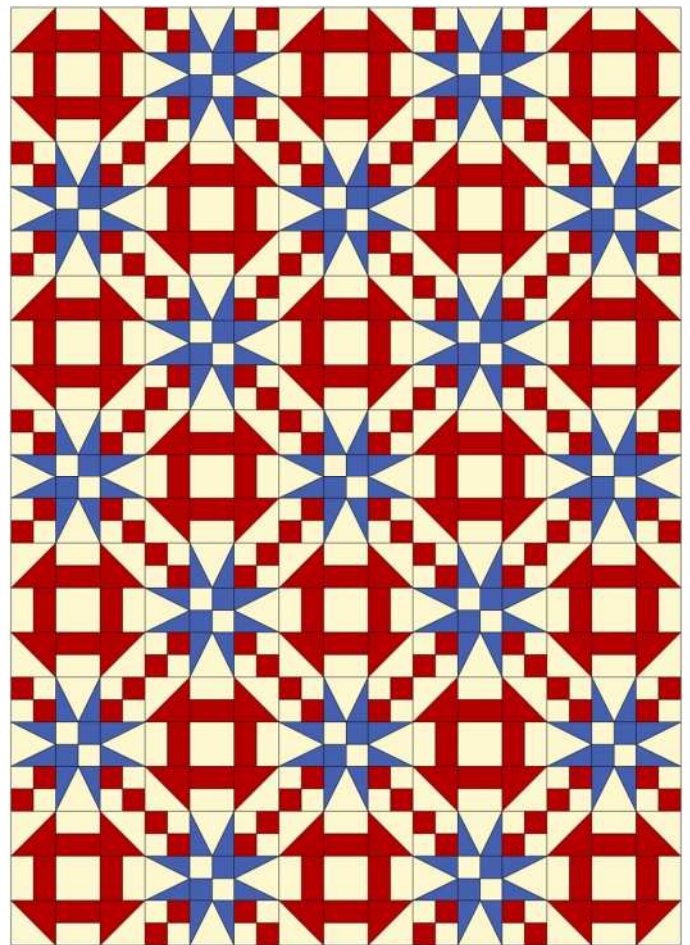
For each block you will need:

- (4) 3.5 inch star points
- (4) 3.5 inch red/white four patches
- (1) 3.5 inch blue/white four patch

Assemble blocks as shown below.



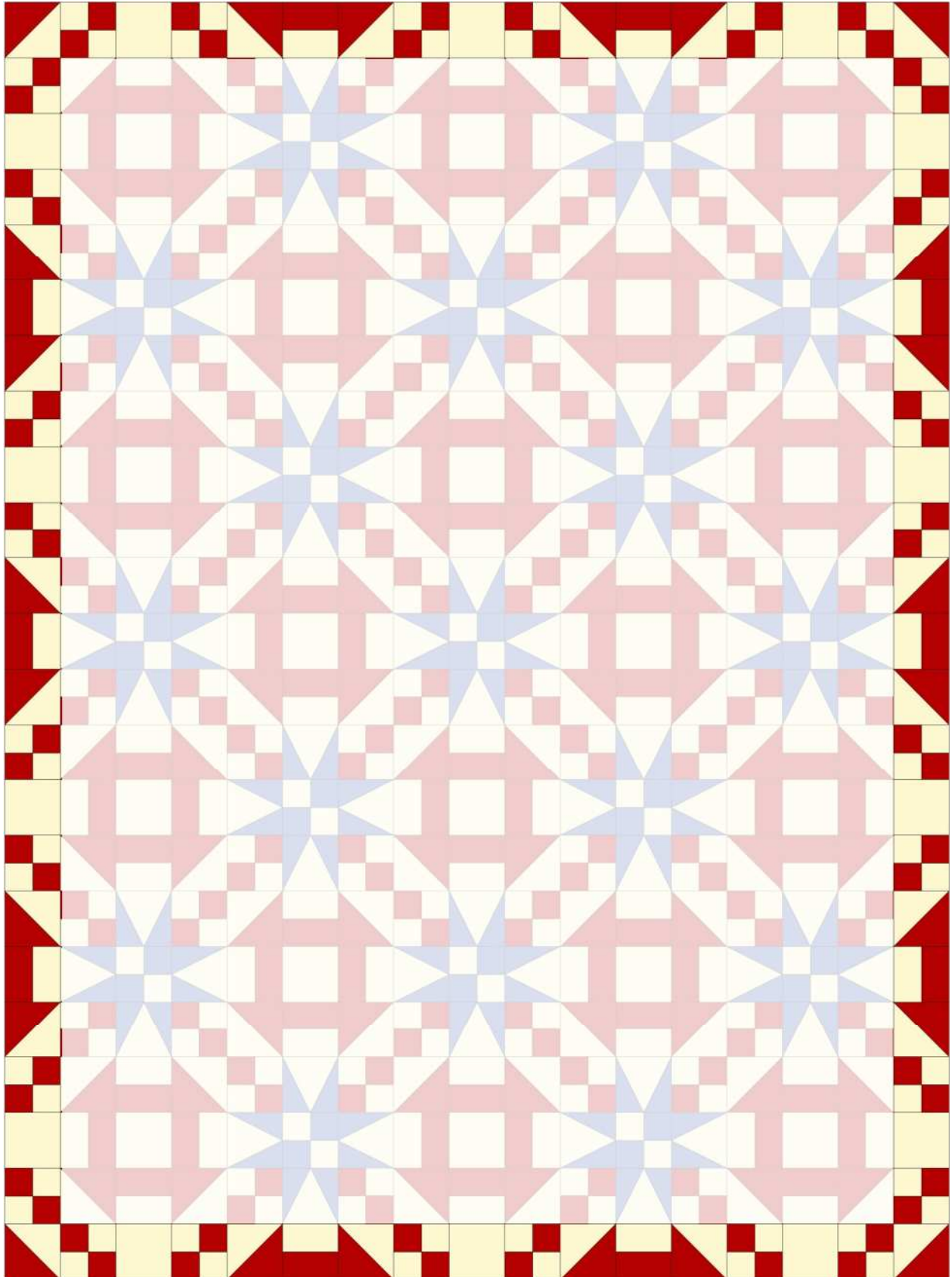
Following the diagram below, assemble the blocks starting with a Churn Dash.



You will piece the first border from a combination of red/white half square triangles, 4 patches, red/white sections from the churn dash blocks, and white squares. All should measure 3.5 inches.

Refer to the diagram below for placement.

Finish the quilt with a blue border cut 3.5 inches.



## ALTERNATE BORDERS

If desired, the quilt can be finished with plain borders.

Inner border is cut 2 inches

Outer border is cut 3.5 inches

Quilt size is approximately 54 x 72

